

**HOUSE & LAND PACKAGE**

**lot 336 proposed rd  
austral 2179**

Manning 22 — Evolution



**350m<sup>2</sup>**  
Lot Size



**200.2m<sup>2</sup>**  
House Size



**4**  
Beds



**2.5**  
Baths



**1**  
Cars

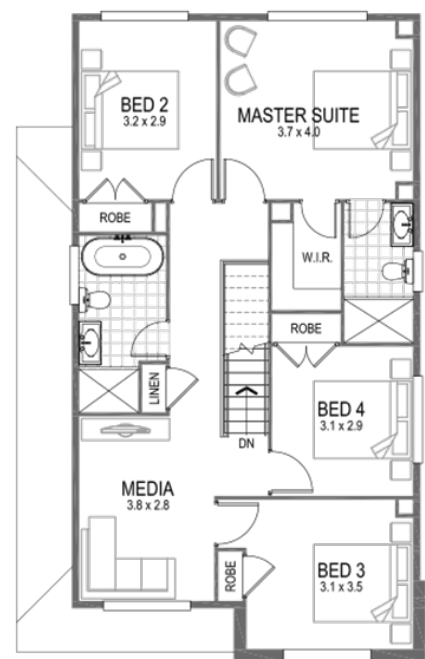
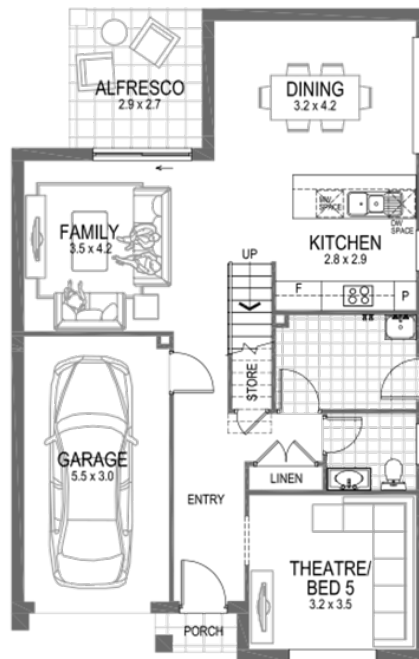


**3**  
Living

**House and land package inclusions**

- Fixed site costs including H1-Class slab
  - 2.6m Ceiling heights
  - Laminate timber flooring throughout, with plush carpet in all bedrooms.
  - 20mm Quantum Zero kitchen stone benchtops
  - 900mm Haier stainless steel oven & cooktop, with 900mm concealed rangehood
  - 600mm built-in stainless steel microwave with trim kit.
  - Fujitsu fully ducted day/night zoning airconditioner system
  - Home security alarm system
- Anticipated Land Registration: October 2024

**+ much more**



**ENQUIRE TODAY**

**Sandra Majstrovic**

0432 338 411

sandra.majstrovic@newlivinghomes.com.au