



HOUSE & LAND PACKAGE

**lot 321 proposed rd
austral 2179**

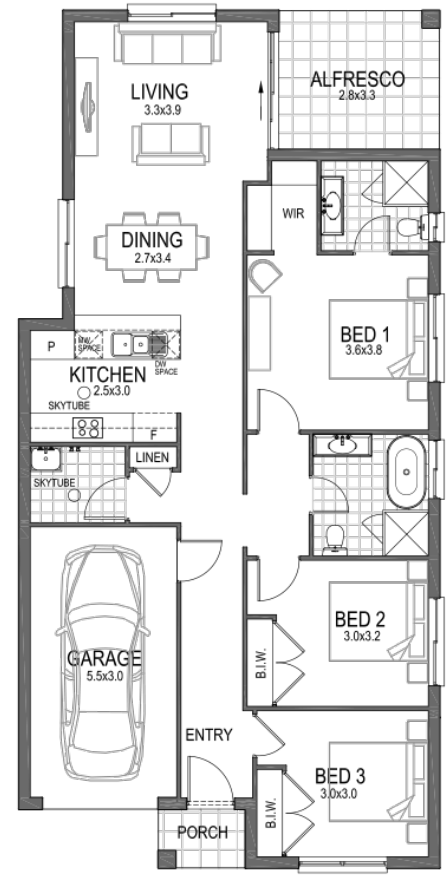
Maple 2 - Zero — Evolution

301m²	140.9m²	3	2	1	1
Lot Size	House Size	Beds	Baths	Cars	Living

House and land package inclusions

- 3.5KW Solar Package
- Laminate timber flooring throughout, with plush carpet to all bedrooms
- 20mm Quantum Zero stone benchtops in the kitchen
- 900mm Haier stainless steel oven and cooktop, with 900mm concealed rangehood
- 600mm built-in stainless steel microwave with trim kit
- Built-in shower niches
- Fujitsu fully ducted day/night zoning air-conditioning system
- Home security alarm system
- Fixed site costs including H1-Class slab

+ much more



ENQUIRE TODAY

Sandra Majstrovic

0432 338 411

sandra.majstrovic@newlivinghomes.com.au

***Conditions:** Images may depict landscaping & decorator items which are not supplied by New Living Homes & are not included in the price. Site costs may vary according to site classification, survey & site inspection, site conditions including rock and fill subject to building setbacks. Separate legal contracts are required for the land component of the "Home and Land" packages. If the vendor of the land is not New Living Homes, New Living Homes is only responsible for the construction of the building. For unregistered land, the construction price will change if the land registers after the indicative date provided by the developer. Prices subject to Statutory Consenting Authority approval and specified conditions, bushfire requirements and acoustic report. Inclusions based on New Living Homes Inclusions unless otherwise specified. New Living Homes reserves the right to revise plans, specifications, and pricing without notice. Please contact a Sales Consultant for more information. All plans are subject to copyright protection. New Living Homes Pty Ltd - BLIC 244889 ABN 67152611713 29/10/2024