



HOUSE & LAND PACKAGE

lot 319 proposed rd austral 2179

Manning 22 — Serena



319m²
Lot Size



200.2m²
House Size



4
Beds



2.5
Baths



1
Cars

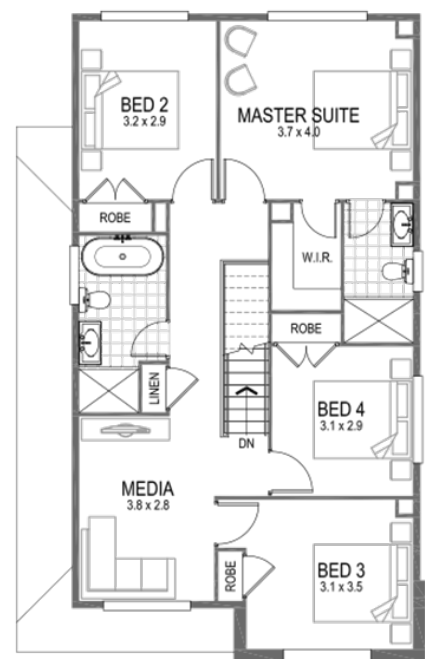
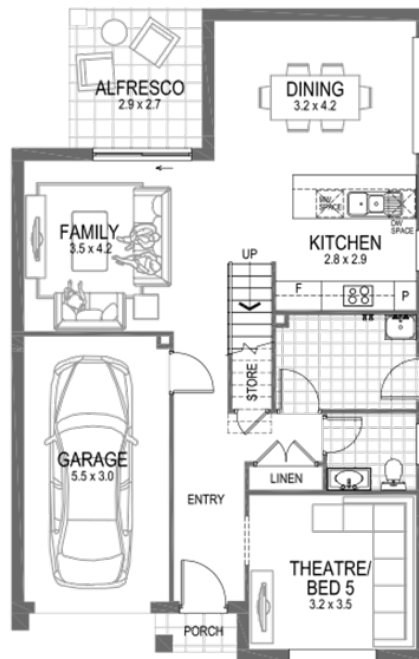


3
Living

House and land package inclusions

- 3.5KW Solar Package
- 2.6m Ceiling heights
- Laminate timber flooring throughout, with plush carpet to all bedrooms
- 20mm Quantum Zero stone benchtops in the kitchen
- 900mm Haier stainless steel oven and cooktop, with 900mm concealed rangehood
- 600mm built-in stainless steel microwave with trim kit
- Fujitsu fully ducted day/night zoning air-conditioning system.
- Smartphone app-enabled home security alarm system
- Fixed site costs including H1-Class slab

+ much more



ENQUIRE TODAY

Sandra Majstrovic

0432 338 411

sandra.majstrovic@newlivinghomes.com.au