



**HOUSE & LAND PACKAGE**

**lot 30 proposed rd  
goulburn 2580**

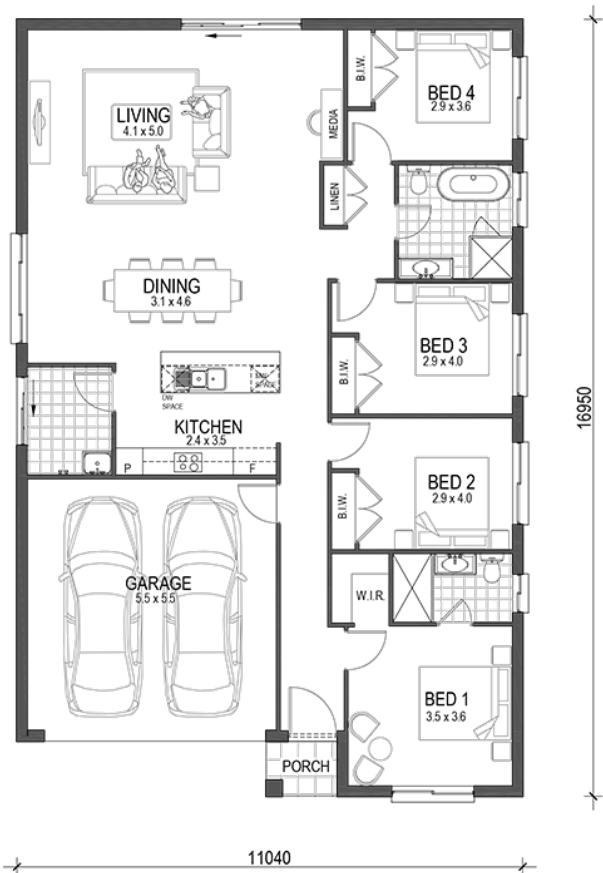
**BLAKELYS RUN**

Ashmore — Bay Facade

<b>701m<sup>2</sup></b> Lot Size	<b>180.7m<sup>2</sup></b> House Size	<b>4</b> Beds	<b>2</b> Baths	<b>2</b> Cars	<b>1</b> Living

**House and land package inclusions**

- ✓ Site cost including H1 class slab
- ✓ Haier 900mm stainless steel electric built-in under-bench oven
- ✓ 900mm stainless steel concealed rangehood
- ✓ 600mm stainless steel freestanding dishwasher
- ✓ 20mm Quantum Zero stone to standard kitchen benchtops
- ✓ Solar Package
- ✓ Home Security Alarm System
- ✓ Fujitsu fully ducted air-conditioning
- + much more**



**ENQUIRE TODAY**

**Natalie Key**

0423 763 600

natalie.keys@newlivinghomes.com.au

\*Conditions: Images may depict landscaping & decorator items which are not supplied by New Living Homes & are not included in the price. Site costs may vary according to site classification, survey & site inspection, site conditions including rock and fill subject to building setbacks. Separate legal contracts are required for the land component of the "Home and Land" packages. If the vendor of the land is not New Living Homes, New Living Homes is only responsible for the construction of the building. For unregistered land, the construction price will change if the land registers after the indicative date provided by the developer. Prices subject to Statutory Consenting Authority approval and specified conditions, bushfire requirements and acoustic report. Inclusions based on New Living Homes Inclusions unless otherwise specified. New Living Homes reserves the right to revise plans, specifications, and pricing without notice. Please contact a Sales Consultant for more information. All plans are subject to copyright protection. New Living Homes Pty Ltd - BLIC 244889 ABN 67152611713 21/3/2025

