



**HOUSE & LAND PACKAGE**

**lot 1342**  
**fig tree hill 2560**

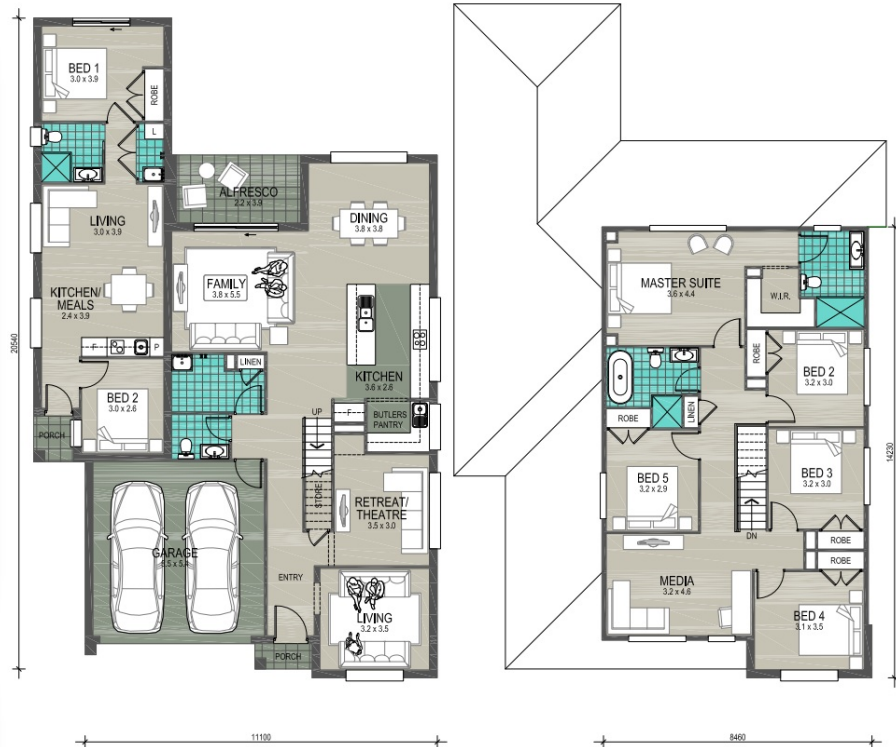
**FIGTREE HILL**

Tuross Twin — Colonnade

<b>450m<sup>2</sup></b>	<b>323.7m<sup>2</sup></b>	<b>6</b>	<b>3.5</b>	<b>2</b>	<b>5</b>
Lot Size	House Size	Beds	Baths	Cars	Living

**House and land package inclusions**

- ✓ Fixed site costs including H1-Class slab
- ✓ Stainless steel Haier kitchen appliances
- ✓ Ceramic Splashback
- ✓ Floating style bathroom vanities
- ✓ Freestanding bath
- ✓ Tiles to living areas and carpet to all bedrooms
- ✓ Selection of stunning tapware & accessories
- ✓ 2440mm ceiling heights
- + much more**



**ENQUIRE TODAY**

**Sandra Majstrovic**

0432 338 411

sandra.majstrovic@newlivinghomes.com.au

**\*Conditions:** Images may depict landscaping & decorator items which are not supplied by New Living Homes & are not included in the price. Site costs may vary according to site classification, survey & site inspection, site conditions including rock and fill subject to building setbacks. Separate legal contracts are required for the land component of the "Home and Land" packages. If the vendor of the land is not New Living Homes, New Living Homes is only responsible for the contract relating to the construction of the building. For unregistered land, the construction price will change if the land registers after the indicative date provided by the developer. Prices subject to Statutory Consenting Authority approval and specified conditions, bushfire requirements and acoustic report. Inclusions based on New Living Homes Inclusions unless otherwise specified. New Living Homes reserves the right to revise plans, specifications, and pricing without notice. Please contact a Sales Consultant for more information. All plans are subject to copyright protection. New Living Homes Pty Ltd - BLIC 244889 ABN 67152611713 10/5/2024